

# Kent Trusses & Bill 124



# MOH Branch Opinion -Overview

## **Question:**

What factors should I consider when evaluating whether the design of pre-engineered wood trusses or engineered wood products qualify for the designer registration/qualification exemptions under Clauses 2.17.4.1.(3)(1) and 2.17.5.1.(2)(h) of the Building Code?

# MOH Branch Opinion -Overview

## **2.17.4.1. General.... (2.17.5.1. General is essentially the same)**

(3) A person is exempt from the requirement to comply with the qualification in Sentence (1) if the person's *design activities* relate only to....

(1) *construction* of **pre-engineered elements** of a *building* provided that the design of the elements is carried out by a person **competent in the specific discipline appropriate to the circumstances.** (Emphasis added.)

# MOH Branch Opinion -Overview

## **Pre-engineered Element Exemption:**

....Many municipalities choose to not require plans for pre-engineered elements, including wood trusses or engineered wood products. As such, the activities associated with the selection and specification of these products would not be subject to the designer qualification requirements of the BCA.

# MOH Branch Opinion -Overview

## **Pre-engineered Element Exemption:**

.... However, where a municipality chooses to ask for plans and specifications for pre-engineered elements, including wood trusses and engineered wood products, Clauses 2.17.4.1.(3)(1) and 2.17.5.1.(2)(h) exempt certain designers of pre-engineered building elements from registration/qualification.

# MOH Branch Opinion -Overview

- **Pre-engineered elements** is taken to mean sections or parts of a building that are produced or manufactured in a standardized way prior to their assembly on site.
- **Person competent in the specific discipline** is taken to mean a person properly qualified, trained or knowledgeable in the application of design principles or methods.
- **Appropriate to the circumstances** is taken to mean suitable and proper to the fact, occurrence, or condition in the time, place, manner, cause, occasion or surroundings.

# MOH Branch Opinion -Overview

In considering an exemption from registration/qualification under Clauses 2.17.4.1.(3)(1) and 2.17.5.1.(2)(h), one may wish to consider the following factors...

# MOH Branch Opinion -Overview

1. Whether the pre-engineered design applies to specific elements that are produced or manufactured in a standardized way prior to their assembly on site.

# MOH Branch Opinion -Overview

3. Whether the building components are prefabricated and marketed for use as pre-engineered components with simplified design/product selection charts and tables based on specific design criteria.

# MOH Branch Opinion -Overview

4. Whether the designer has specialized licensing, training or knowledge in the application of design principles or proprietary design software for the selection and/or layout of the pre-engineered elements.

# MOH Branch Opinion -Overview

In consideration of the above, typical, pre-fabricated, wood trusses for houses and small buildings that are designed in accordance with the Truss Plate Institute of Canada (TPIC) publication “Truss Design Procedures and Specifications for Light Metal Plate Connected Wood Trusses” by designers trained and supported in TPIC procedures; and laid-out by designers trained and supported in the use of proprietary software developed by TPIC member organizations, would generally be seen as meeting the tests for registration/qualification exemptions.

# OWTFA Position Paper on Bill 124 - Preliminary Draft Excerpts

The members of OWTFA have a stellar record of designing and fabricating high quality trusses in accordance with TPIC guidelines. To the best of our knowledge, there is not a single example of a house where trusses designed and produced by an OWTFA member have failed in use due to a design issue.

# OWTFA Position Paper on Bill 124 - Preliminary Draft Excerpts

...In light of this opinion, it is the position of OWTFA that its members should not be providing truss layouts stamped with a BCIN.

In cases where the local Municipality is insisting on a BCIN as part of the truss layout submission, that BCIN must come from the building designer, and not from our members. We are recommending to our members that in these cases they supply the truss layout drawing to the builder or to the builder's designer for review and certification with a BCIN. The inclusion of the BCIN implies an added level of design review which extends beyond the scope of practice of our members.

# What makes Kent Trusses Competent?

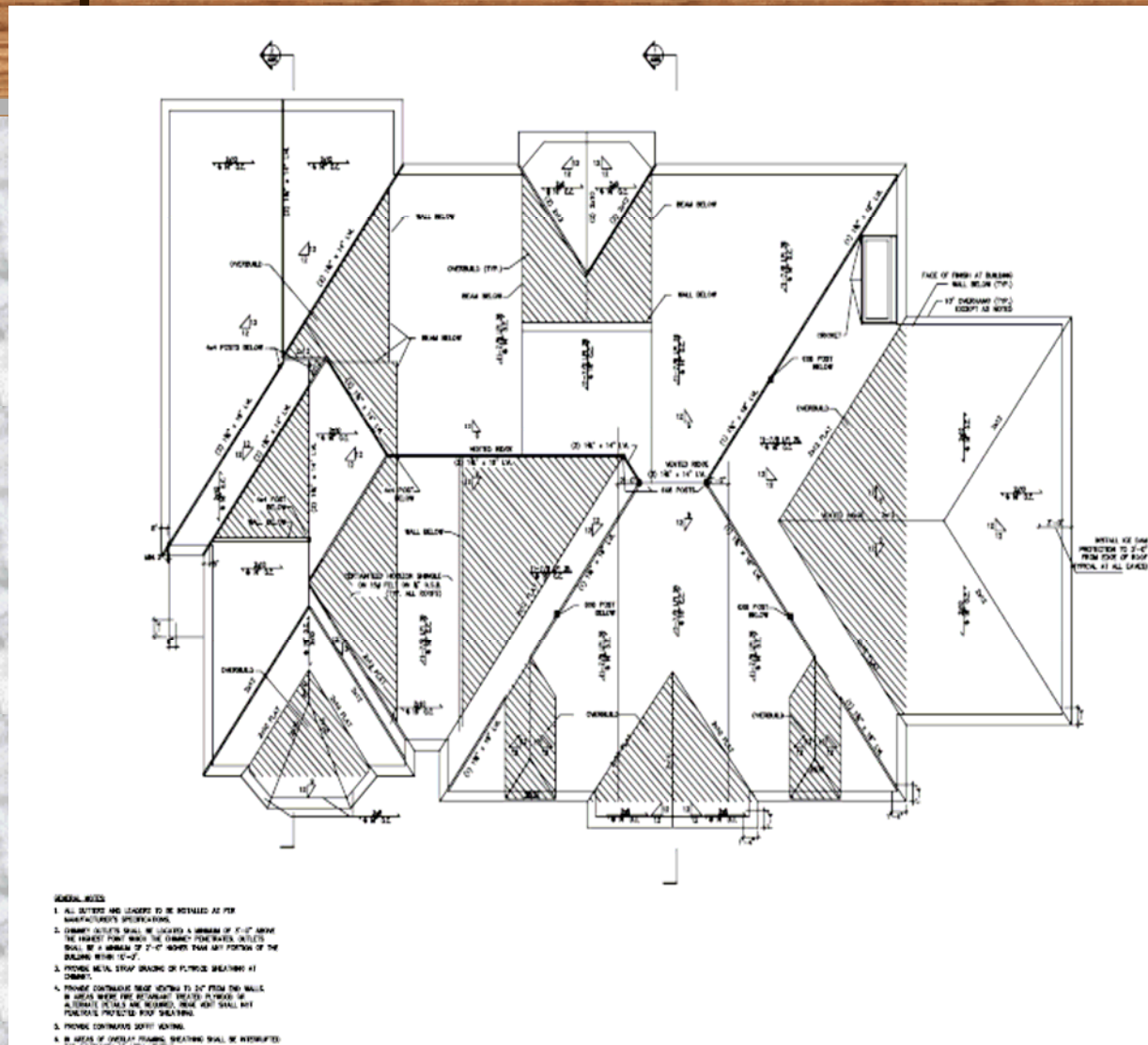
- Our people
  - Over 30 years in business
  - Over 200 years experience among our technical staff

# What makes Kent Trusses Competent?

- Our processes
  - Typical order must pass review by 4 separate people
    1. Sales support prepares placement guide from architectural drawings and prepares preliminary designs and hardware summary
    2. Senior Technical sales reviews placement guide for compliance with architectural drawings and structural requirements



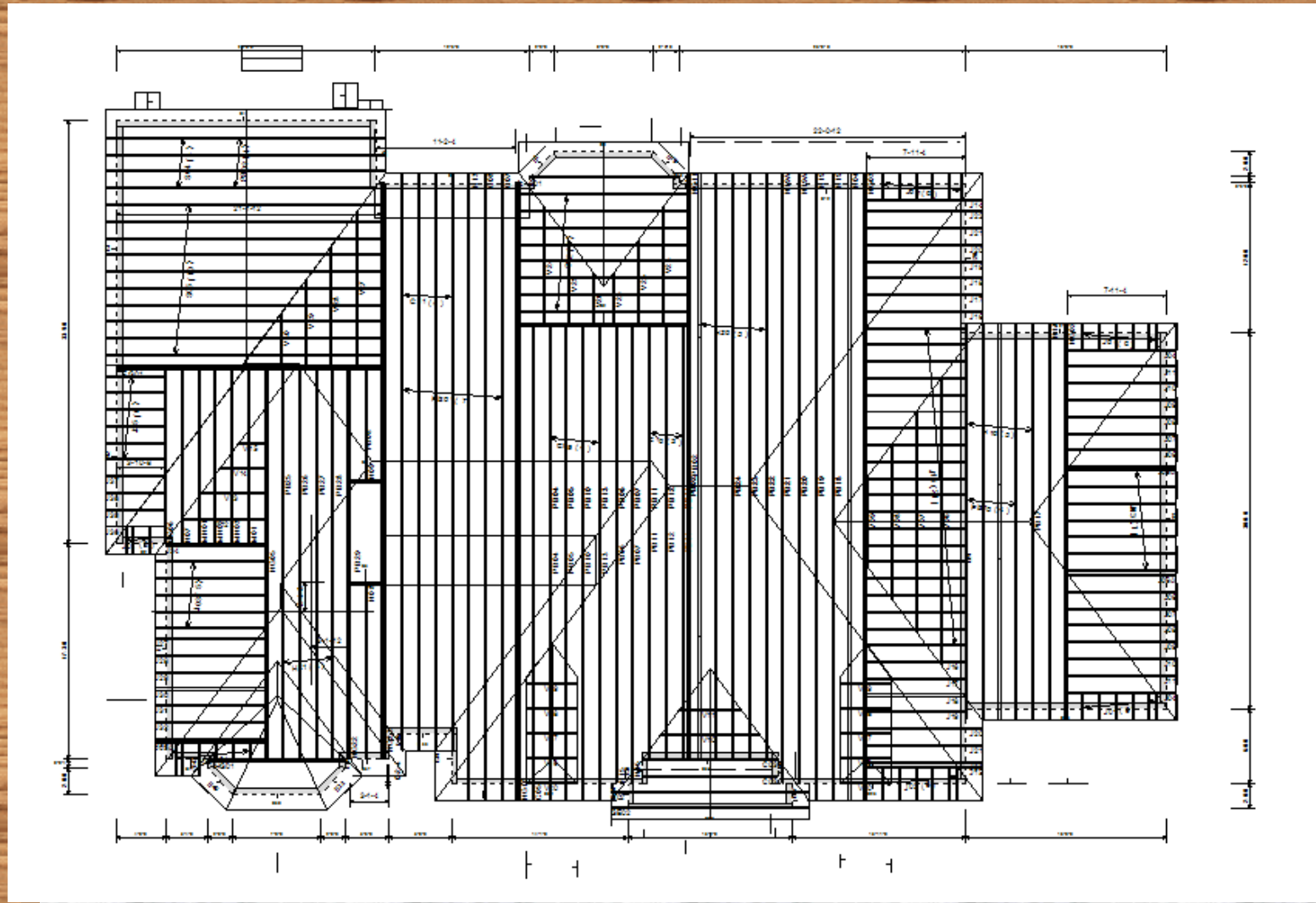
# Sample Architectural Drawings



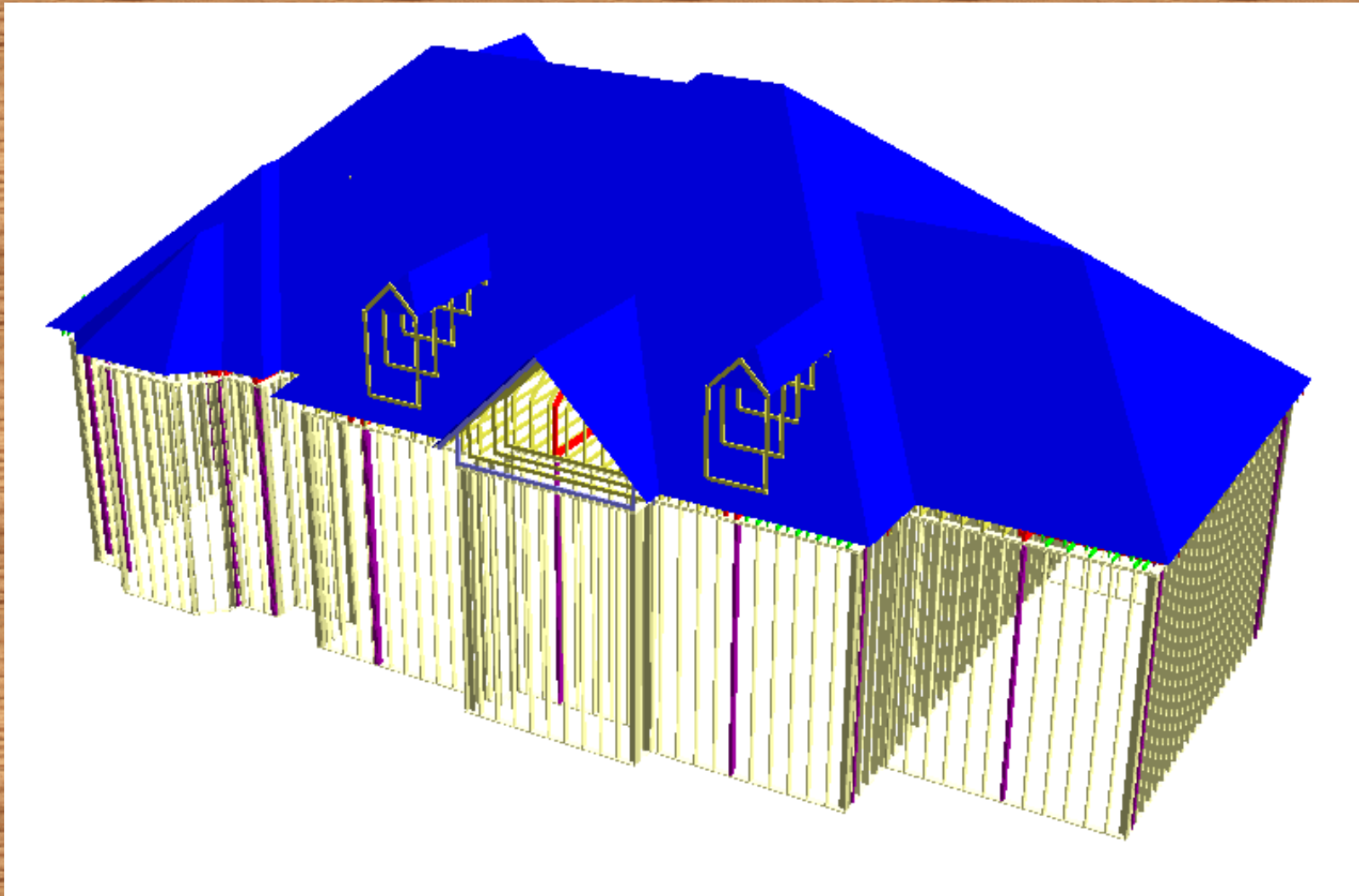
Deerhurst Resort - April 18, 2006



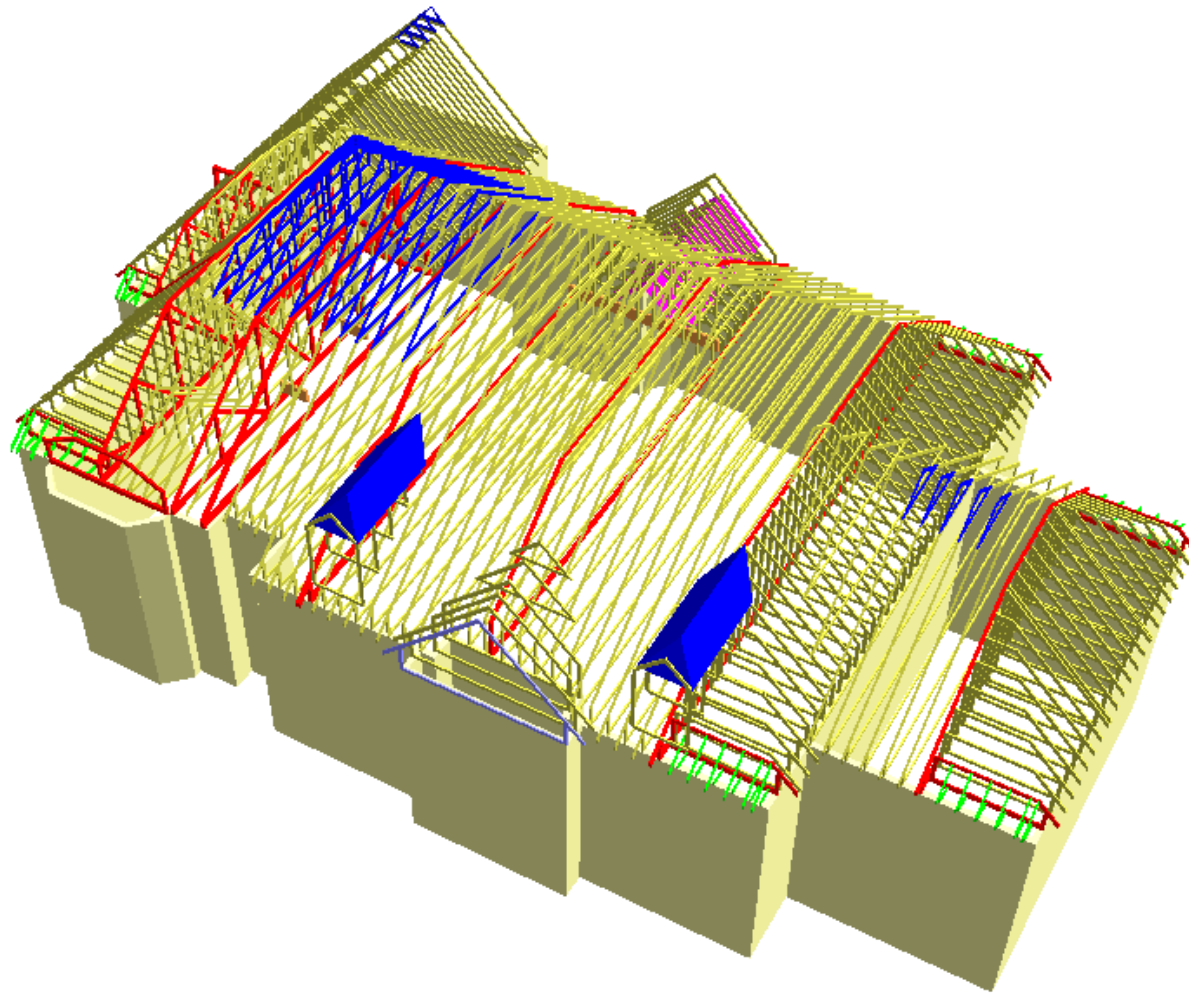
# Sample Preliminary Drawings



# Sample Preliminary Drawings



# Sample Preliminary Drawings



Deerhurst Resort - April 18, 2006

21

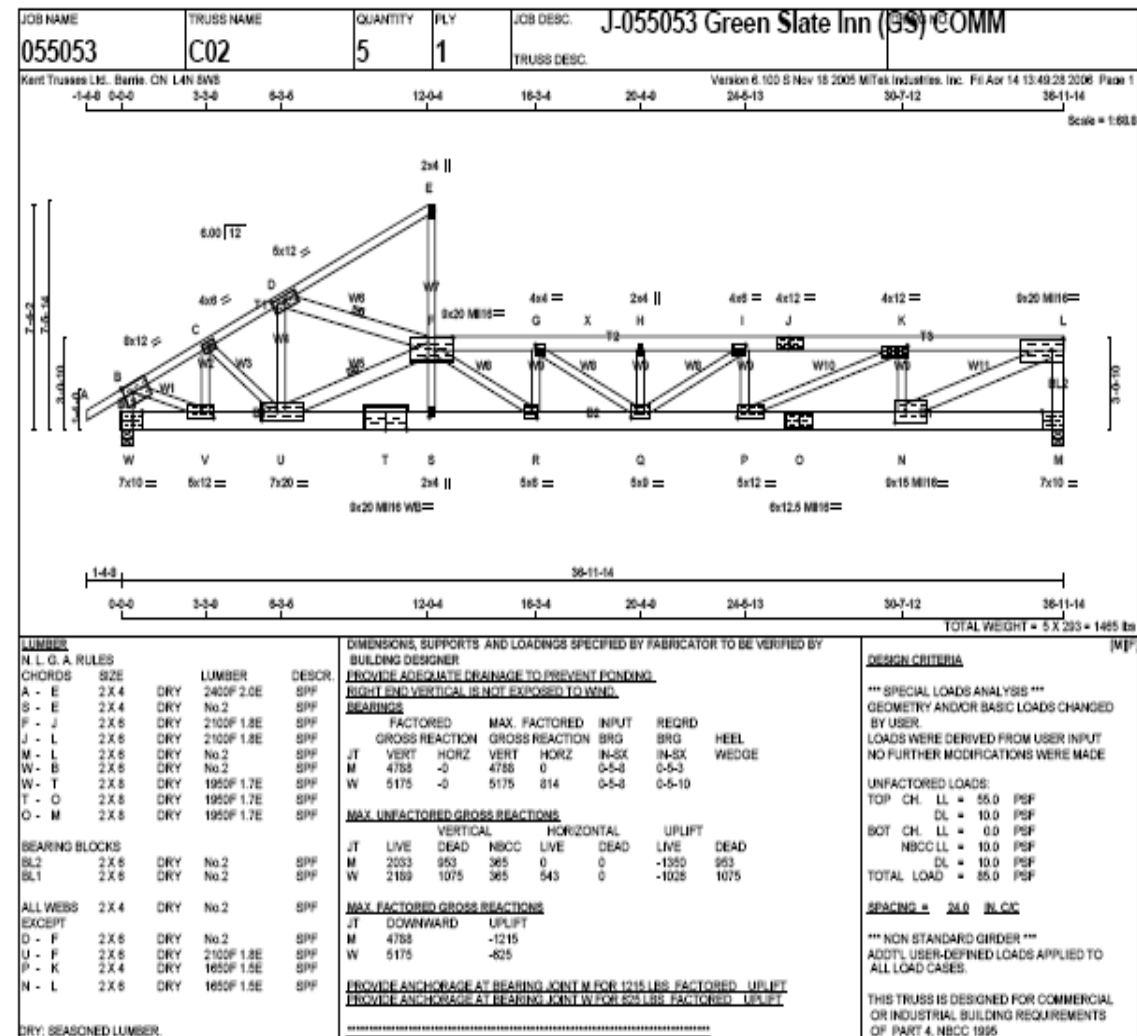
# What makes Kent Trusses Competent?

- Our processes (cont'd)

Completed placement guide and preliminary designs are forwarded to design.

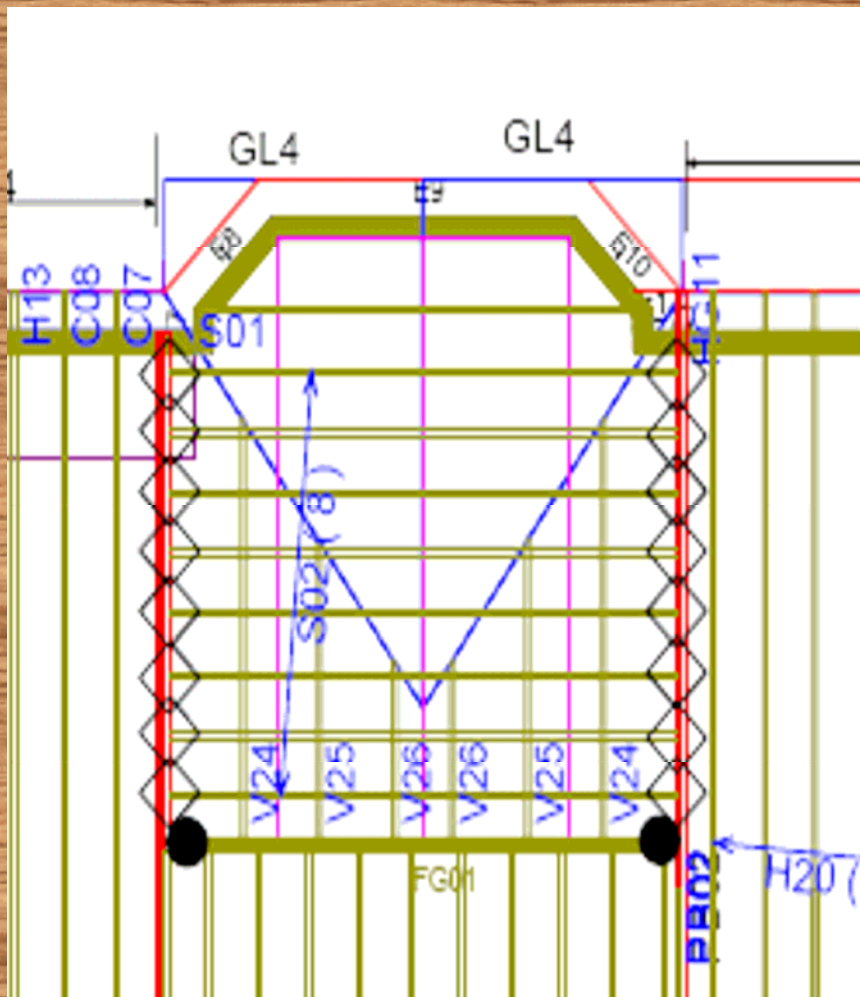
3. Designer prepares final designs, ensuring that all structural requirements are addressed and prepares all site documentation
4. Before production a Senior Designer reviews the designs and placement guide for accuracy

# Sample Final Drawings





# Sample Final Drawings



## HANGER NOTES

- LU26
- HGUS48
- ◆ HGUS28-2
- △ HUS26

# What makes Kent Trusses Competent?

## Our training commitment

- Ongoing training for all technical staff
  - Design & Layout software
  - Truss Plate Institute of Canada Requirements
  - BCIN qualified people throughout sales and design departments

# What makes Kent Trusses Competent?

- Our manufacturing processes
  - Robotic Saws controlled by information fed directly from our design/engineering software
  - Laser projection systems also fed directly from the design/engineering software

# 30 Year Commitment to Quality

## What Does Quality mean at Kent Trusses?

- Every job is designed the Kent way
- Only top quality materials are used
- State of the art software and equipment
- A History of continuous efforts to bring new or improved products to our customers

# Summary

- The people of Kent Trusses have shown over more than 30 years that they are ready and able to meet the technical needs of the engineered wood market.

# Summary

- Kent Trusses will continue to do whatever is required to bring quality products and services to our customers.
- Bill 124 is a challenge, but also an opportunity

# Kent Trusses & Bill 124

