



4x2 OPEN WOOD WEB FLOOR TRUSS

WITH 12" TRIMMABLE ENDS



TC Live Load :	40	PSF
TC Dead Load :	10	PSF
BC Dead Load :	5	PSF

APPLICATION:
Floor

DEFLECTION FACTOR:

Live Load :	Span / 360
Total Load :	Span / 240

DESIGN CODE :

NBC of Canada 1995

Spans checked for Vibration and Limit States Design.

No concrete topping used.

Deck attachment: GLUED AND NAILED

Floor SPF Plywood thickness 5/8 inch for spacing 19.2" or less, 3/4" otherwise.

No strapping

Refer to appropriate Mitek Engineered Sealed drawing for specific installation details

CCMC No. 19085783746171 Jan. 01, 2009.



14" deep 4X2				
SPACING	12"	16"	19.2"	24"
8'-0" span				7'-9"
10'-0" span				9'-9"
12'-0" span				11'-9"
14'-0" span				13'-9"
16'-0" span				15'-9"
18'-0" span				17'-9"
20'-0" span				19'-9"
22'-0" span			21'-9"	n/a
24'-0" span			23'-9"	n/a
26'-0" span		25'-9"	n/a	n/a

16" deep 4X2				
SPACING	12"	16"	19.2"	24"
8'-0" span				7'-9"
10'-0" span				9'-9"
12'-0" span				11'-9"
14'-0" span				13'-9"
16'-0" span				15'-9"
18'-0" span				17'-9"
20'-0" span				19'-9"
22'-0" span			21'-9"	n/a
24'-0" span			23'-9"	n/a
26'-0" span		25'-9"	n/a	n/a
28'-0" span	27'-9"	n/a	n/a	n/a

NOTES:

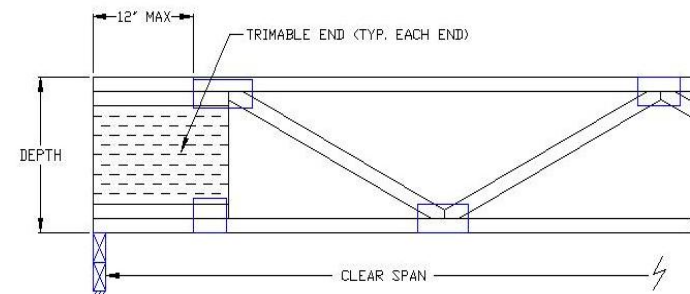
KENT TRUSSES LTD. IS RESPONSIBLE ONLY FOR THE STRUCTURAL ADEQUACY OF THIS COMPONENT BASED ON THE DESIGN CRITERIA AND LOADINGS SHOWN. IT IS THE RESPONSIBILITY OF THE OTHERS TO ENSURE COMPONENT SUITABILITY AND TO VERIFY DIMENSIONS.

LUMBER:

1. Dry service condition, unless noted otherwise.
2. Lumber is seasoned at time of fabrication.
3. Lumber not to be treated with fire retardant or corrosive chemicals.

FABRICATION, HANDLING & INSTALLATION :

1. Ezy Trim members cannot be cut, drilled, or altered beyond first 12" on each end of joist.
2. Design assumes quality controlled fabrication. All members to be in good bearing contact with plates fully pressed into sound lumber with no wane.
3. Design assumes top chord to be laterally restrained by sheathing attached with nails or with nails and glue.
4. Continuous strongback bridging is required as per engineered Ezy Trim design.
5. "ARO" trimmable end portion is plated to top and bottom chords only as shown. Installer must provide adequate fastening of joist chords to "ARO" block to reduce any potential movement of members, especially when used for interior walls without loading from above.



DATE: 10/14/05

VER: 4x2.1.01

Kent Trusses Limited Copyright 2005 All rights reserved